

Measure I Bond

Citizens' Oversight Committee Meeting
November 8, 2016



CVUSD: Prop 39

- Phase 1
- Phase 2
- Measure I Coordination of Work

CVUSD: Projects & Salaries

- Technology- Endowment & Salaries
- Planning – Projects & Salaries

CVUSD: DSA Certification

- DSA- Background
- DSA Certification Progress

CVUSD: Master Plan

- Master Planning Process



Prop 39 – Summary

- Program Started- 2013
- 5- Year program
 - Fiscal Year 1- 2013-2014*
 - Fiscal Year 2- 2014-2015*
 - Fiscal Year 3- 2015-2016*
 - Fiscal Year 4- 2016-2017*
 - Fiscal Year 5- 2017-2018*
- Sites were identified as having the highest energy use per Square Foot. This was based on utility data and compared to the district as a whole, ranked and prioritized.
- 12 sites were identified as the highest energy consumers.

Proposition 39- Phase I

Prop 39- Phase 1

(Year-1&2: 2013- 2014) – Construction occurred 2016 Summer- this required engineering audits, scope development, bid, award, construction, close-out and commissioning

5- Sites/Schools

- *Newbury Park High School*
- *Westlake High School*
- *Sequoia Middle School*
- *Aspen Elementary School*
- *Wildwood Elementary*
- Removal and replacement of HVAC Units that were old and inefficient, replaced with new energy efficient units. Controls work, repair of existing units, maintenance of units.
- **Cost 1.58 Million** – (Energy savings will occur throughout the life-cycle of units. Incentives will be paid over 3 years and may come as rebates for future energy projects, parts and a portion of the of the funds redirected Measure I.
- **1.3 Million- Prop 39 – State Funded**
- Remainder from Measure I

Proposition 39-Phase II

Prop 39- Phase II

(Year 3&4: 2015-2016) – Construction planned to occur 2017 Summer- this requires engineering audits, scope development, bid, award, construction, close-out and commissioning

7- Sites/Schools

- *Thousand Oaks High School*
- *CVUSD District Office*
- *Adult ED – Waverly*
- *Los Cerritos Middle School*
- *Cypress Elementary School*
- *Westlake Elementary School*
- *Horizon Hills School*

Currently in Planning. Work will include Scoping, contract negotiation, bid, award, construction, close-out and commissioning.

Future work may include:

- Removal and replacement of HVAC Units that are identified as old and inefficient to be replaced with new energy efficient units. Controls work, repair of existing units, maintenance of units.
- **Cost 2.0 Million (estimated)**– (Energy savings will occur throughout the life-cycle of units. Incentives will be paid over 3 years and may come as rebates for future energy projects, parts and a portion of the of the funds redirected Measure I.
- **2.0 Million approximately will be Prop 39 – State Funded**
- Measure I funds TBD

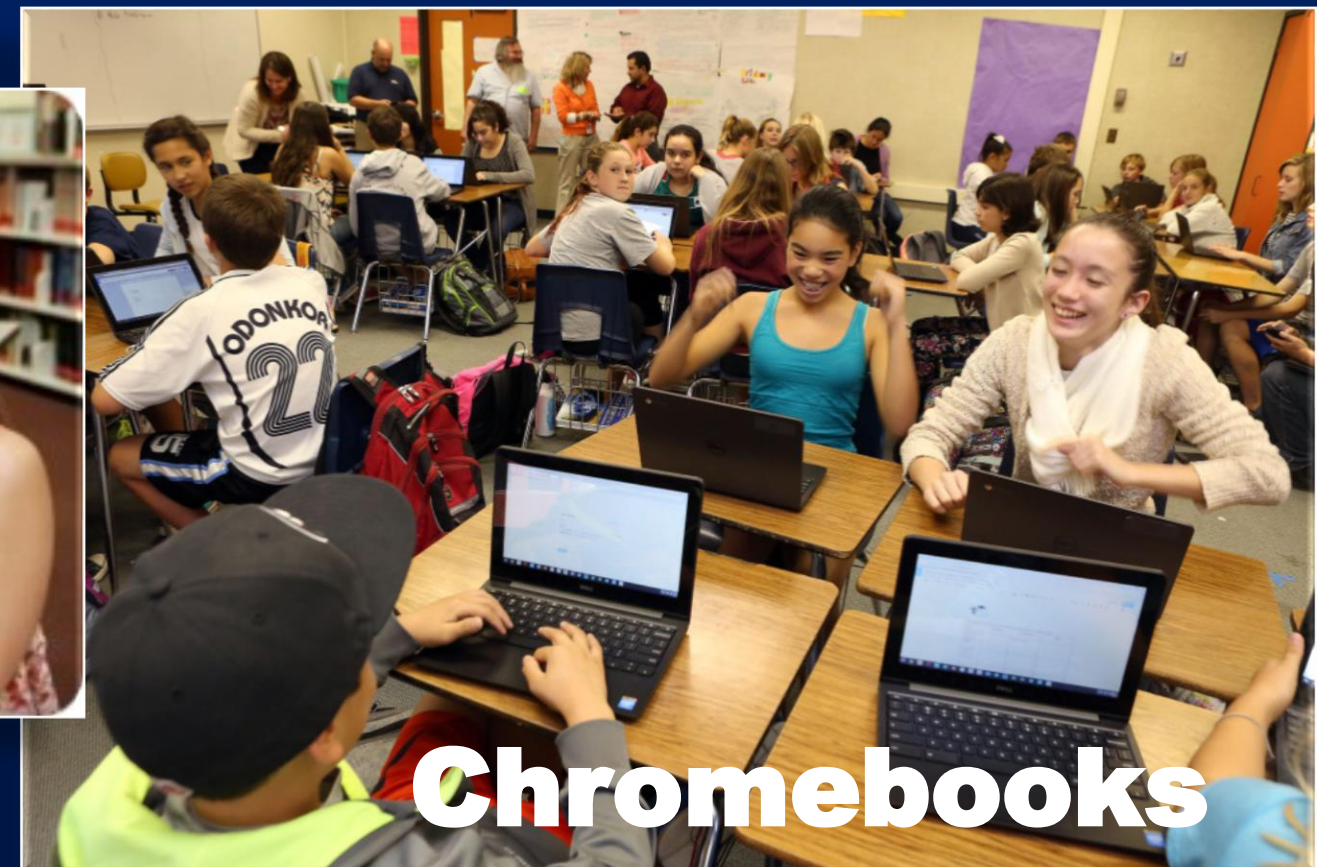


Measure I Bond

Projects & Salaries



Technology Measure I Endowment



Technology for all!



Since Measure I was passed, CVUSD has added the following Technology Devices to date:

- **Window Devices: 2,307**
- **IOS Devices: 1,200**
- **Chromebooks: 1,895**
- **Interactive Displays: 50**
- **Projectors: 249**
- **Printers: 111**
- **Document Cameras: 111**
- **Mobile Device Carts: 129**



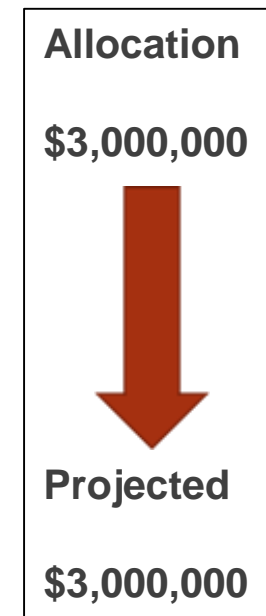
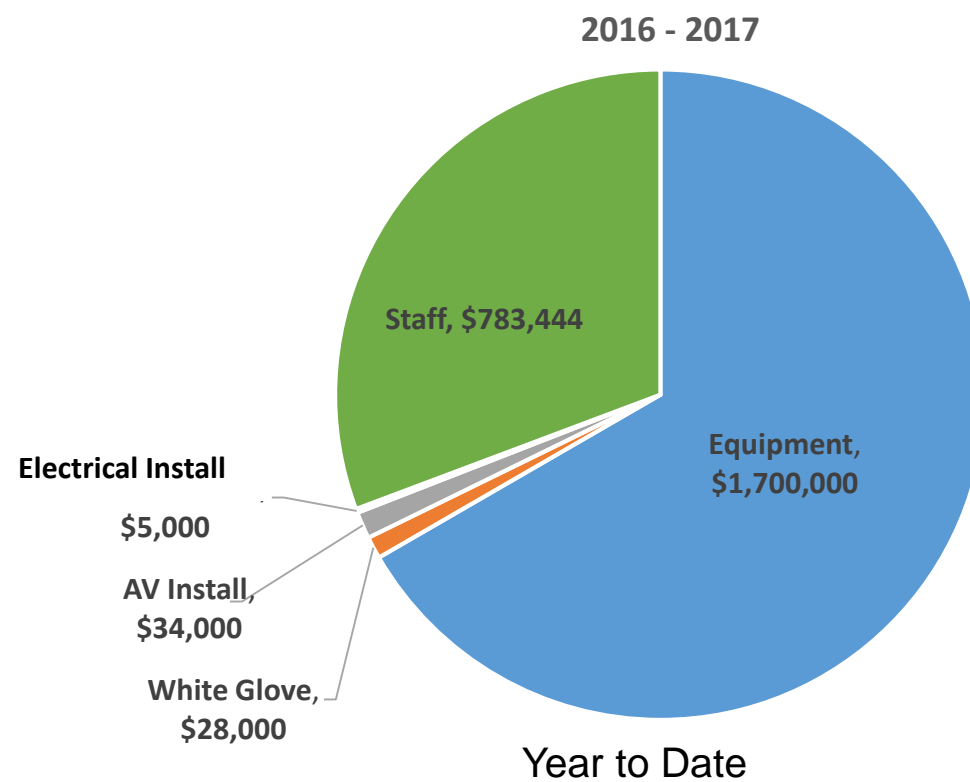
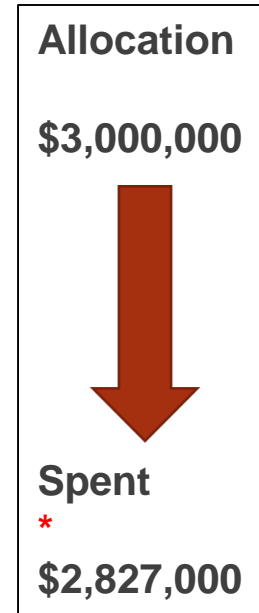
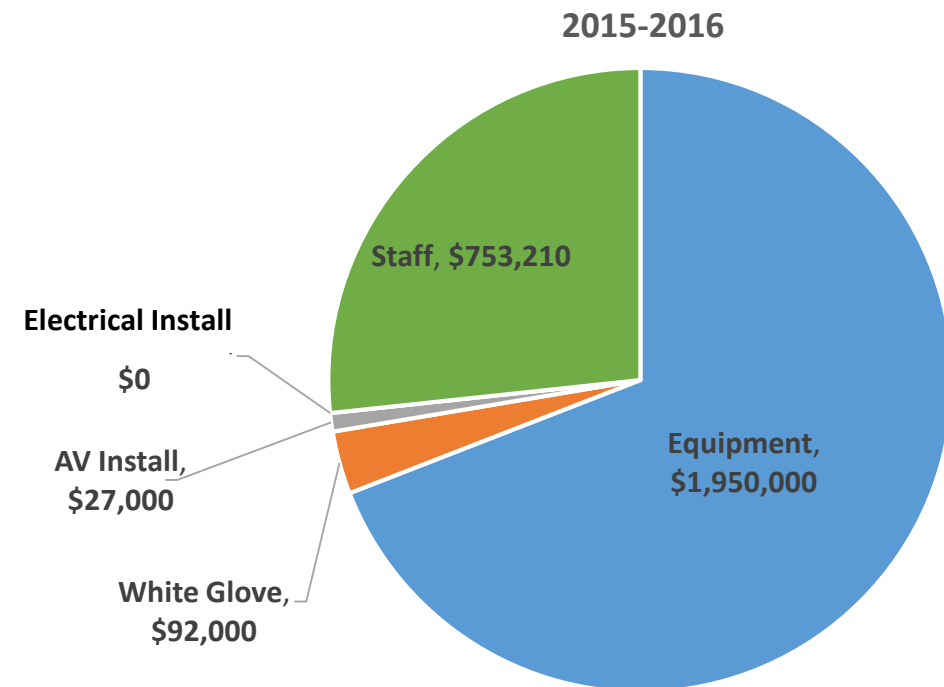
New Technology By Fiscal Year

Pre Measure I		2015-2016		2016-2017 Projected		Total Devices
Approximate Device Quantity		New Device Quantity		New Device Quantity		
Windows Devices	8692 *	Windows Devices	1119	Windows Devices	1188	9,845
IOS Devices	745	IOS Devices	480	IOS Devices	720	1,945
Chromebooks	440	Chromebooks	912	Chromebooks	983	2,335
Interactive Displays	168	Interactive Displays	18	Interactive Displays	32	214
Indoor WiFi Coverage - % per Campus		Indoor WiFi Coverage - % per Campus		Indoor WiFi Coverage - % per Campus		Indoor Wifi Coverage
All Comprehensive High Schools	60%	All Comprehensive High Schools	100%	All Comprehensive High Schools	100%	100% at all schools except Alternative HS's by November 2016
Conejo Valley High School	10%	Conejo Valley High School (6 WAP's)	32%	Conejo Valley High School (6 WAP's)	32%	
Century Academy	25%	Century Academy (4 WAP's)	50%	Century Academy (4 WAP's)	50%	
All Middle Schools	60%	All Middle Schools	100%	All Middle School	100%	
Sycamore Canyon School (K-8)	30%	Sycamore Canyon School (K-8)	50%	Sycamore Canyon School (K-8)	100%	
Most Elementary Schools	1%	Most Elementary Schools Except 5	100%	All Elementary Schools	100%	
Conejo & Glenwood Elementary	100%	Madrona Elementary	80%			
EARTHS & Westlake Elementary	80%	Westlake Elementay	80%			
Banyan Elementary	50%	Acacia Elementary	1%			
Lang Ranch Elementary	40%	Cypress Elementary	1%			
Madrona Elementary	10%	Wildwood Elementary	1%			
Weathersfield Elementary	5%					Outdoor Wifi Coverage In Planning currently. Determining scope by site.

* Some new device counts replace existing equipment

** WAP: Wireless Access Points are portable and can be moved to any site. WAP's cost \$450.

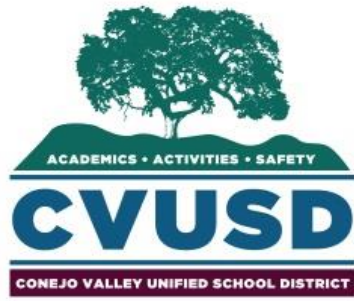
Expenditures By Fiscal year



2017-2018

Expenditures will be based on the Technology Master Plan currently in development.

* Unspent funds will roll-over



Current Technology Salary Schedule 2016-2017



Job Description:	Annual Salary:	Measure I:		General Fund:		Total Funding:
Director	\$ 163,873.00	40%	\$65,549.20	60%	\$98,323.80	100%
Assistant Director	\$ 120,051.00	50%	\$60,025.50	50%	\$60,025.50	100%
Supervisor	\$ 96,855.00	67%	\$64,892.85	33%	\$31,962.15	100%
Administrative Assistant	\$ 90,615.00	35%	\$31,715.25	65%	\$58,899.75	100%
Systems Analyst	\$ 120,085.00	35%	\$42,029.75	65%	\$78,055.25	100%
Network Engineer	\$ 114,992.00	35%	\$40,247.20	65%	\$74,744.80	100%
Database Administrator	\$ 136,819.00	0%	\$0.00	100%	\$136,819.00	100%
Systems Administrator	\$ 122,602.00	35%	\$42,910.70	65%	\$79,691.30	100%
Systems Analyst	\$ 98,814.60	35%	\$34,585.11	65%	\$64,229.49	100%
Systems Technician	\$ 89,878.00	35%	\$31,457.30	65%	\$58,420.70	100%
Site Technician II	\$ 82,762.00	35%	\$28,966.70	65%	\$53,795.30	100%
Site Technician II	\$ 85,828.00	35%	\$30,039.80	65%	\$55,788.20	100%
Site Technician II	\$ 16,220.26	35%	\$5,677.09	65%	\$10,543.17	100%
Site Technician I	\$ 11,954.75	35%	\$4,184.16	65%	\$7,770.59	100%
Site Technician I	\$ 78,028.00	35%	\$27,309.80	65%	\$50,718.20	100%
Site Technician I	\$ 71,964.00	35%	\$25,187.40	65%	\$46,776.60	100%
Site Technician I	\$ 78,848.61	35%	\$27,597.01	65%	\$51,251.60	100%
Site Technician I	\$ 76,478.00	35%	\$26,767.30	65%	\$49,710.70	100%
Site Technician I	\$ 79,621.00	35%	\$27,867.35	65%	\$51,753.65	100%
Site Technician I	\$ 71,964.00	35%	\$25,187.40	65%	\$46,776.60	100%
Site Technician I	\$ 79,621.00	35%	\$27,867.35	65%	\$51,753.65	100%
Site Technician I	\$ 69,190.00	35%	\$24,216.50	65%	\$44,973.50	100%
Site Technician I	\$ 64,026.95	35%	\$22,409.43	65%	\$41,617.52	100%
Site Technician I	\$ 63,659.00	35%	\$22,280.65	65%	\$41,378.35	100%
Site Technician I	\$ 63,659.00	35%	\$22,280.65	65%	\$41,378.35	100%
Site Technician I	\$ 63,408.16	35%	\$22,192.86	65%	\$41,215.30	100%
	\$ 2,211,817.33	36%	\$783,444.32	64%	\$1,428,373.01	100%

Planning Salary Schedule

Job Description:	CVUSD Employee/ Other:	Annual Salary:	Measure I:	
Executive Director Facilities, Maintenance & Operations	CVUSD	\$ 163,990.13	25%	\$ 40,997.53
Director, Planning and Construction	CVUSD	\$ 154,946.16	25%	\$ 38,736.54
Planning Technician	CVUSD	\$ 104,987.40	25%	\$ 26,246.85
Administrative Assistant	CVUSD	\$ 78,424.20	75%	\$ 58,818.15
Project Manager	CVUSD	\$ 136,442.00	90%	\$ 122,797.80
Construction Supervisor	CVUSD	\$ 115,593.39	100%	\$ 115,593.39
Energy Manager	CVUSD	\$ 145,744.58	0%	\$ -
Assistant Construction Manager	Consultant	\$ 183,040.00	100%	\$ 183,040.00
Project Director	Consultant	\$ 240,700.00	100%	\$ 240,700.00
Construction Manager	Consultant	\$ 257,920.00	100%	\$ 257,920.00
DSA Consultant	Consultant	\$ 94,000.00	100%	\$ 94,000.00
		\$ 1,675,787.86	67%	\$ 1,178,850.26



Measure I Bond

Current Projects



Measure I : Projects

Planning Phase

Planning: 31 Sites – Projects identified

- Master Planning Newbury Park Complex
- Master Planning Thousand Oaks Complex
- Master Planning Westlake Complex

Technology Infrastructure Phase III

- 27 Sites being considered for outdoor wireless includes (4) Elementary Schools, (1) High School

Scoping Phase:

- Newbury Park Pool Retrofit
- Waverly Adult School – Certifications- Multiple Portable Buildings
- Waverly Adult School – Sewer Repair

Design Phase:

- Westlake High School- Kiln
- Waverly Fire Alarm System
- Horizon Hills Fire Alarm System
- Colina Middle School – Certifications- 2-Story Building
- Colina Middle School – Certifications- Lunch Shelter

Construction Phase:

Locker Room Facilities Renovations

- Colina Middle School
- Redwood Middle School
- Sequoia Middle School
- Los Cerritos Middle School

Repairs & Renovations

- Thousand Oaks High School- Roll-up Doors
- Thousand Oaks High School- Flooring

Playground Equipment

- Lang Ranch Elementary School

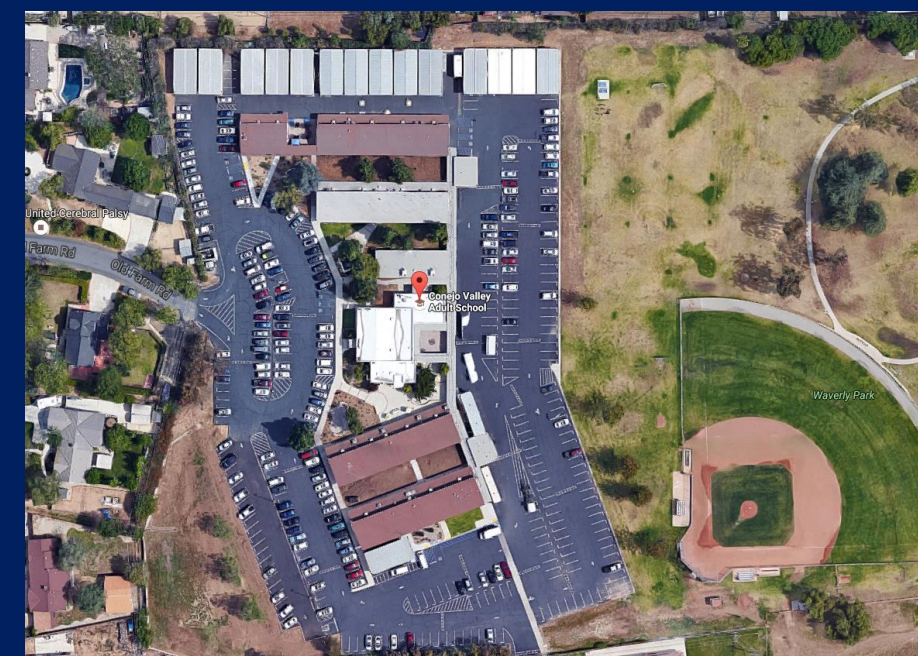
Close-out:

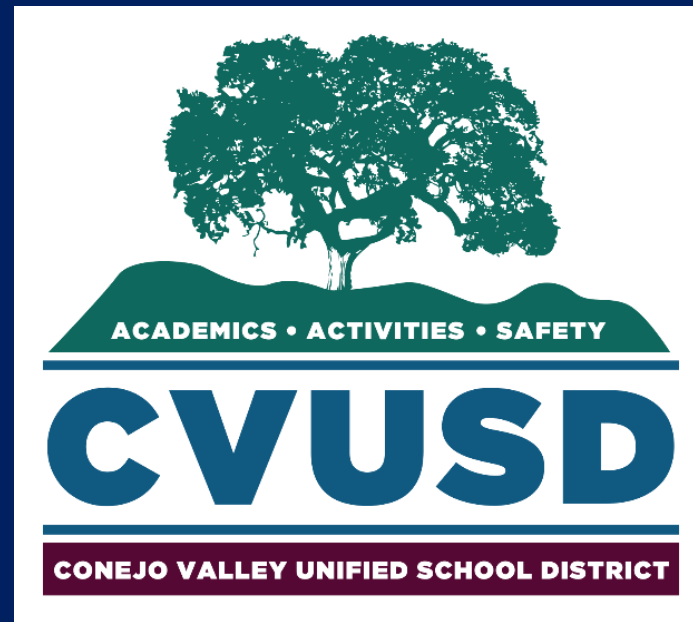
Technology Infrastructure Phase II

- Acacia Elementary
- Conejo Elementary
- Cypress Elementary
- Glenwood Elementary
- Madrona Elementary
- Sycamore Canyon K-8
- Westlake Elementary
- Wildwood Elementary

HVAC

- Redwood Middle School





Measure I Bond

Certification Effort

The 1933 Long Beach Earthquake

- March 10, 1933 at 5:55 p.m.
- Long Beach and surrounding areas experience a 6.3 earthquake.
- 70 schools were destroyed with hundreds of others damaged.



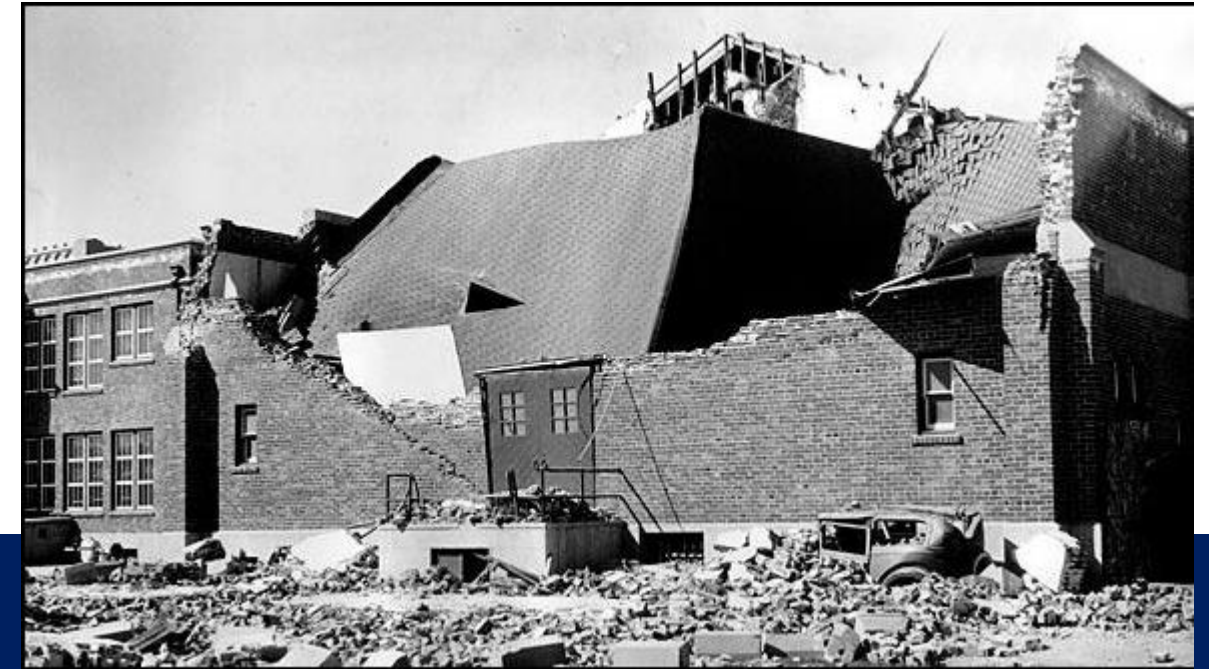
Jefferson Junior High School, The Field Act & Public School Construction: A 2007 Perspective

Field Act passes 30 days later

Background Of The Field Act

The Field Act has its genesis in the 6.3 magnitude Long Beach earthquake of March 10, 1933. In that earthquake, more than 230 school buildings were either destroyed, suffered major damage, or were judged unsafe to occupy. The buildings had been poorly designed and were not constructed to resist earthquake forces. Fortunately, it was 5:55 p.m. on a Friday evening, and schools were closed. It was lost on no one that a disaster had been averted by fewer than four hours.

Governor James Rolph, Jr. and the Legislature responded quickly by enacting the Field Act (named after Assembly member Don C. Field), which required earthquake-resistant design and construction of all public schools. It was enacted on April 10, 1933, exactly 30 days after the earthquake. It has since governed the planning, design, and construction of billions of dollars of public school (K-14) building investments.



Field Act Requirements

The Field Act (Education Code §17280-17317 and 80030-81149) is built on four major principles:

- Seismic design standards
- Plan review
- Construction inspections
- Special tests

More specifically, the Field Act requires:

- The Division of the State Architect must write design standards for public schools.
- Public school building construction plans must be prepared by qualified California licensed structural engineers and architects.
- Designs and plans must be checked by DSA for compliance with the Field Act before contracts for construction can be awarded.
- Qualified inspectors, independent of the architecture and engineering contractors and hired directly by the school districts, must continuously inspect construction and verify compliance with the approved plans.
- Responsible architects and/or structural engineers must observe the construction periodically. Changes to plans (if necessary) must be prepared by the responsible architects and/or structural engineers and are subject to approval by DSA.
- Special tests, if needed, must be ordered by DSA and performed by certified testing laboratories.
- Architects, engineers, inspectors, and contractors must file reports, under penalty of perjury, that verify that actual construction complies with approved plans.



Figure 4 Landers Elementary School with minor non-structural damage and immediate reuse after the 7.3 magnitude 1992 Landers earthquake. There has been no partial or full collapse of any public school building constructed to the requirements of the Field Act since 1933.

Field Act Compliant Structures

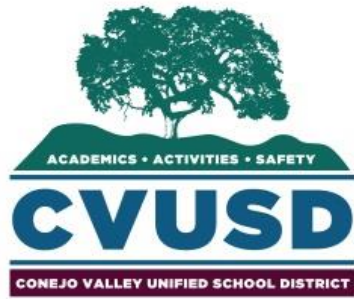
There has been no partial or full collapse of any public school building constructed to the requirements of the Field Act since 1933!



Figure 2 Marina District Apartment building damage during the 6.9 magnitude 1989 Loma Prieta earthquake. Two nearby public schools were not damaged and were used as emergency shelters.



Figure 3 California State University Northridge parking structure built in the early 1990s collapsed after the 6.7 magnitude 1994 Northridge earthquake.



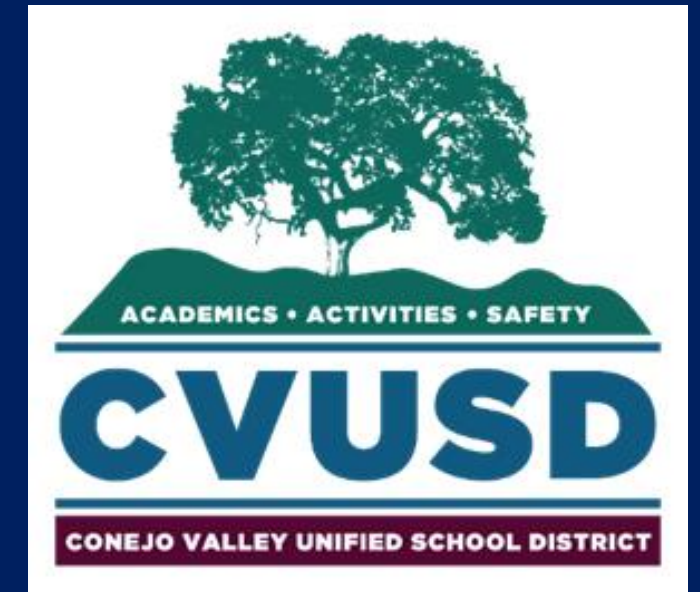
The Division of the State Architect (DSA) reviews projects for conformance with structural, fire/life safety, and accessibility requirements. Energy efficiency is also reviewed if the project has applied for incentive.

(Note that all aspects of the projects must comply with all code requirements whether that portion is reviewed by DSA or not.)

School projects must be designed in accordance with Title 24 of the California Building Standards Code. Title 24 is a California amended version of the International Building Code.

CERTIFIED PROJECTS STARTING - APRIL 22, 2015

Site	Description	
ASP	Modernization	5/7/2015
BAN	Lunch Shelter	8/6/2015
COL	HVAC System	7/29/2015
COL	HVAC System	11/19/2015
GLN	Lunch Shelter	10/9/2015
NPH	HVAC System	6/23/2015
NPH	Exterior Bleacher	9/16/2015
POK	Lunch Shelter	10/16/2015
SCS	(2) Classroom Portables	6/29/2015
SEQ	Boys & Girls Clubs	8/3/2015
WFL	Lunch Shelter	10/8/2015
ACA	Classroom Created in Infill Space	3/7/2016
LCR	Classroom Portable & Lunch Shelter	3/18/2016
LRE	New Elementary School	4/25/2016
LCR	Boys & Girls Club	6/3/2016
SCS	Child Care Center	9/19/2016
CON	Child Care Center	9/19/2016
WFL		
WWD	Classroom Portables	9/20/2016
WHS	Exterior Concrete Bleacher	9/20/2016
		Canceled
MDW	Shade Structure	9/22/2016



Recent CVUSD Projects Certified!

Continued effort includes over 60 Application #'s to be certified.

Includes 109 projects at District Sites



Lang Ranch Elementary School

Project: Built – 1997

Closed with Certification: April 25, 2016



April 25, 2016

Certification & Close of File
Revised

Dr. Ann N. Bonitatibus
Conejo Valley Unified School District
1400 East Janss Road
Thousand Oaks, California 91362

Project: LANG RANCH ELEMENTARY SCHOOL
Application #: 67934
File Id #: 56-9
Scope: CONSTRUCTION OF ADMIN./CLSRM./K.G./M.P. BLDG., 5 HANDBALL WALLS, ENCLOSURES, RETAINING WALL

Dear Dr. Ann N. Bonitatibus:

The Department of General Services' records indicate that the construction of the referenced project has been completed in accordance with design documents approved by the Department, and that all the Verified Reports covering the construction have been received. Therefore, the Department of General Services Certifies as follows:

This project is in compliance with California State regulations as to the safety of design and construction of public schools, and for the accommodation of persons with disabilities.

As stated in our letter approving the plans and specifications for this project, the Department does not review design documents or construction for compliance with the electrical, mechanical, or plumbing regulations. It is the responsibility of the professional consultants named on the application to verify compliance with appropriate parts of the California Building Code, and to submit Verified Reports documenting compliance.

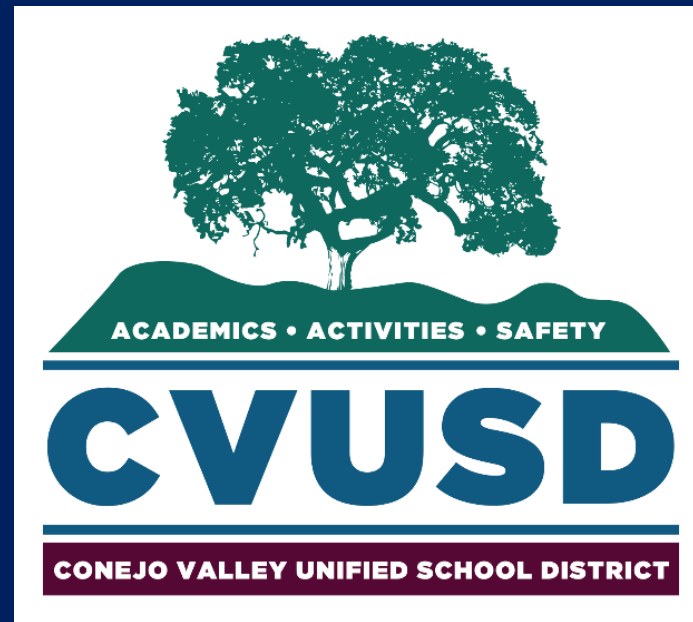
Sincerely,

Dimitar Dimitrov for

Chester "Chet" Widom, FAIA
State Architect
Division of the State Architect
CW: dd

Cc: Architect/Engineer
Director of Facilities
File



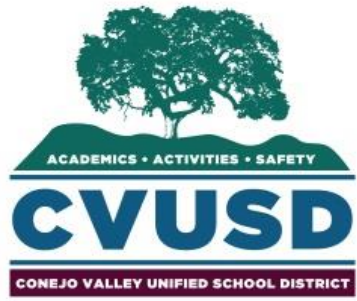


Measure I Bond

Creating the Facilities Master Plan



Planning for the Future!



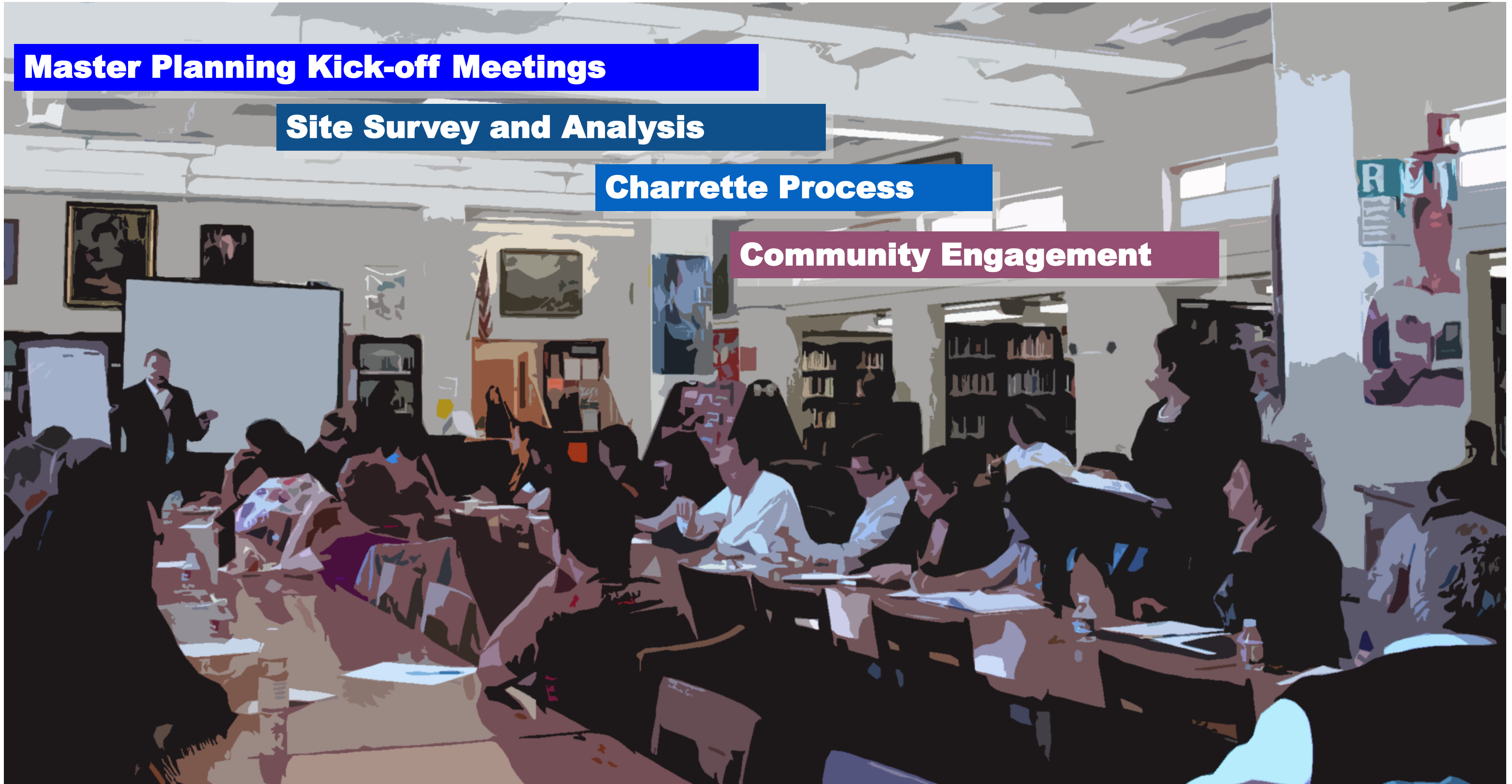
Working collaboratively with experienced Architects,
supported by CVUSD Facilities staff to develop Master
Plans for over 31 District sites . *33 Total with M&O

Master Planning Kick-off Meetings

Site Survey and Analysis

Charrette Process

Community Engagement



Master Planning Checklist

GENERAL

SAFETY - INCLUDES FIRE LIFE SAFETY REQUIREMENTS

ADA- AMERICANS WITH DISABILITIES ACT

STRUCTURAL

CURB APPEAL- SITE RENEWAL

SPECIAL PROGRAMS- INCLUDES: STEM/STEAM, ARTS, SCIENCES, ETC...

SITE

DROP OFF

PARKING

DEFINITION OF ENTRY

FENCING, SECURITY

PLAYGROUND: SIZE ADEQUATE? PLAYGROUND SURFACING CONDITION; INCORPORATE TURF?

CORE FACILITIES ADEQUACY

FOOD PREP AND SERVING

INDOOR DINING

LUNCH SHELTER

MULTIPURPOSE/ASSEMBLY/AUDITORIUM

LIBRARY

ADMINISTRATION

GYMNASIUM BUILDING

SPECIALTY CLASSROOMS: SCIENCE, COMPUTERS, ARTS, MUSIC

BASIC CODE ISSUES/ UPGRADES

SEISMIC UPGRADES

FIRE ALARM, SECURITY SYSTEMS

DISABLED ACCESS

PARKING

PATH OF TRAVEL: RAMPS, ELEVATORS, DOOR HARDWARE

UNCERTIFIED PROJECTS

SYSTEMS

HVAC

TECHNOLOGY

DEFERRED MAINTENANCE

WINDOWS

ROOFING

DEVELOPMENT OPPORTUNITIES



Thousand Oaks High School aerial view, looking south down Moorpark Road, 1966 and 2016



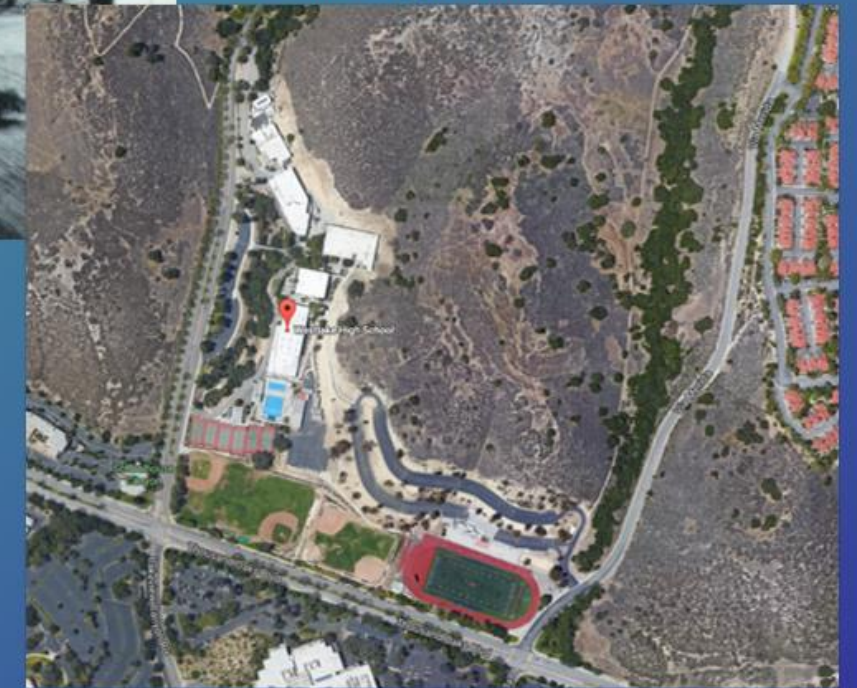
Thousand Oaks Complex

Westlake Complex

Westlake School- before 1978



Westlake High School- 2016



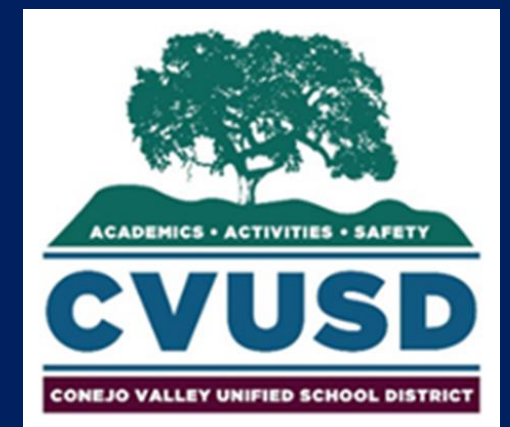
Newbury Park High School- 1967



Newbury Park High School- 2016



Newbury Park Complex





Newbury Park HS



Sycamore Canyon K-4



Cypress ES



Madrona ES

CVUSD Master Planning includes assessing and planning for a “Family” of Schools/Sites

The Complex



Sequoia MS



Danyon ES



Carthage Magnet



Walnut CS

Thousand Oaks High School aerial view, looking
sc 066 and 2016



Thousand Oaks Complex

Site Type:	Site Name:	Complex:
Elementary School	Acacia	Thousand Oaks
Elementary School	Aspen	Thousand Oaks
Other	District Office	Thousand Oaks
Elementary School	Glenwood	Thousand Oaks
Other School/Site	Horizon Hills	Thousand Oaks
Elementary School	Ladera	Thousand Oaks
Elementary School	Madrona	Thousand Oaks
Other	Park Oaks	Thousand Oaks
Middle School	Redwood	Thousand Oaks
High School	Thousand Oaks	Thousand Oaks
Other	University	Thousand Oaks
Other School/Site	Waverly	Thousand Oaks
Elementary School	Weathersfield	Thousand Oaks
Elementary School	Wildwood	Thousand Oaks

Westlake School- before

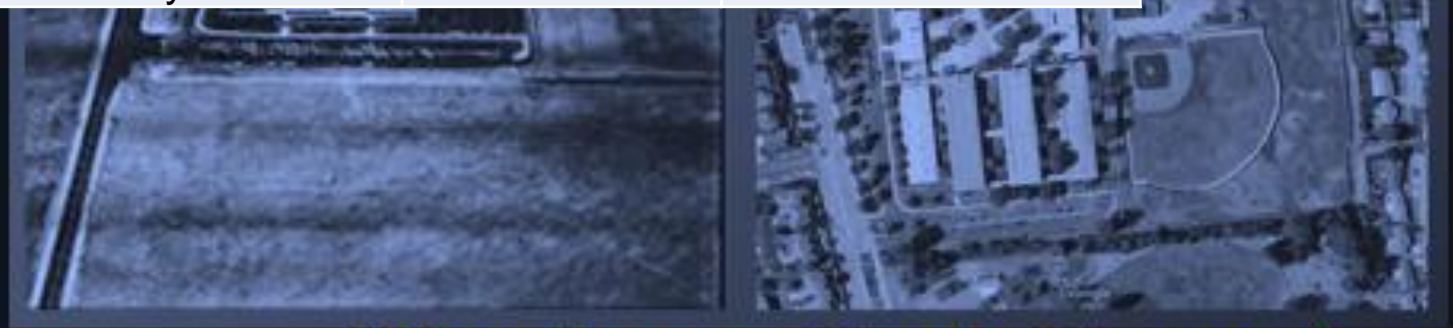


Westlake Complex

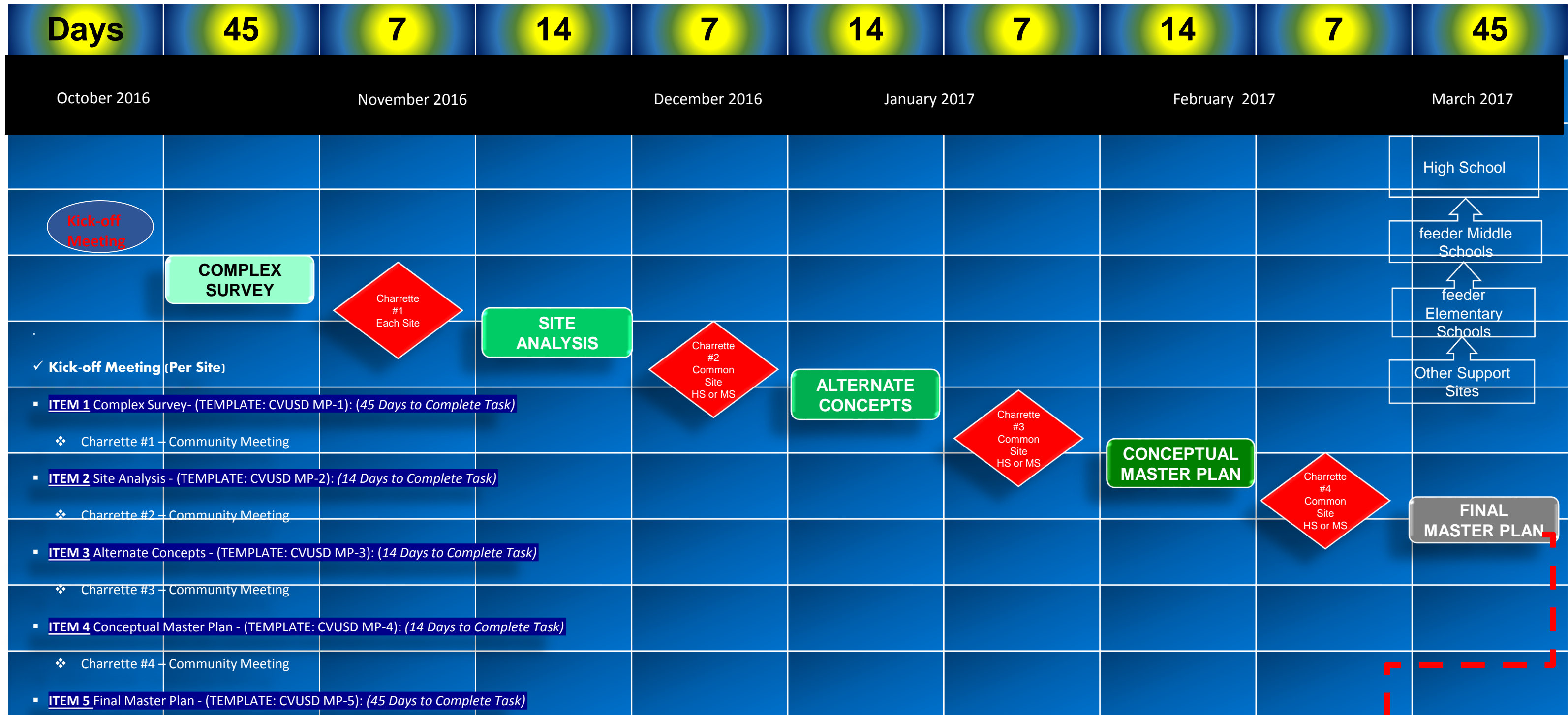
Site Type:	Site Name:	Complex:
Elementary School	Westlake	Westlake
Middle School	Colina	Westlake
Elementary School	Conejo	Westlake
Other	Meadows/MATES	Westlake
Other	Triunfo	Westlake
High School	Westlake	Westlake
Elementary School	Lang Ranch	Westlake
Elementary School	Westlake Hills	Westlake
Middle School	Los Cerritos	Westlake

Newbury Park Complex

Site Type:	Site Name:	Complex:
Elementary School	Earths Magnet	Newbury Park
High School	Newbury Park	Newbury Park
Elementary School	Maple	Newbury Park
Middle School	Sequoia	Newbury Park
Elementary School	Walnut	Newbury Park
Elementary School	Banyan	Newbury Park
Elementary School	Cypress	Newbury Park
K-8	Sycamore Canyon	Newbury Park



Newbury Park Complex

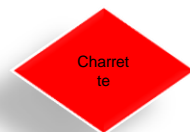


Conejo Valley Unified School District – Master Planning Templates and Charrettes

KICK-OFF MEETING: Principals, Plant Managers, Design Team, M&O, Architects

CHARRETTE

- 1: Principals, Plant Managers, Design Team, M&O, Architects
- 2: Principals, Plant Managers, Board, Design Team, M&O, Architects, Community, Various Stakeholders
- 3: Principals, Plant Managers, Board, Design Team, M&O, Architects, Community, Various Stakeholders
- 4: Principals, Plant Managers, Board, Design Team, M&O, Architects, Community, Various Stakeholders



CAD & FINAL DOCUMENT SUBMITTAL



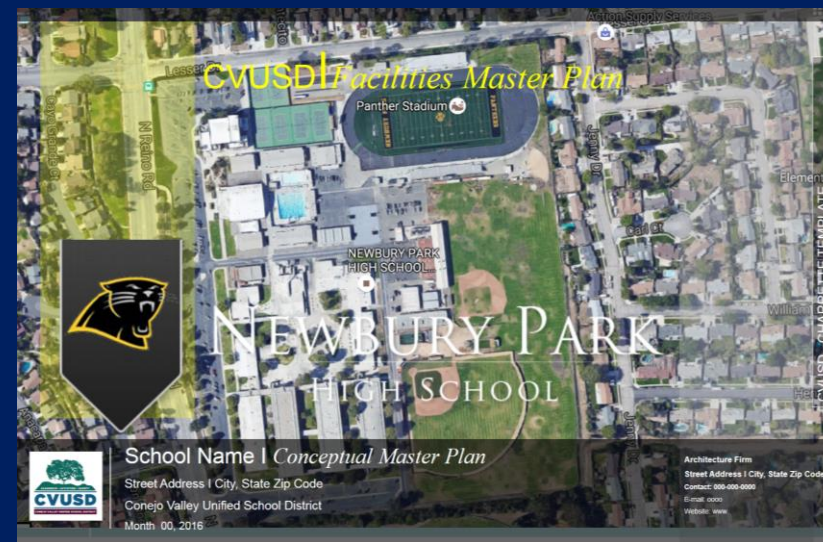
1 Survey
Template



2 Site Analysis
Guidelines



3 Alternative Concepts
Guidelines

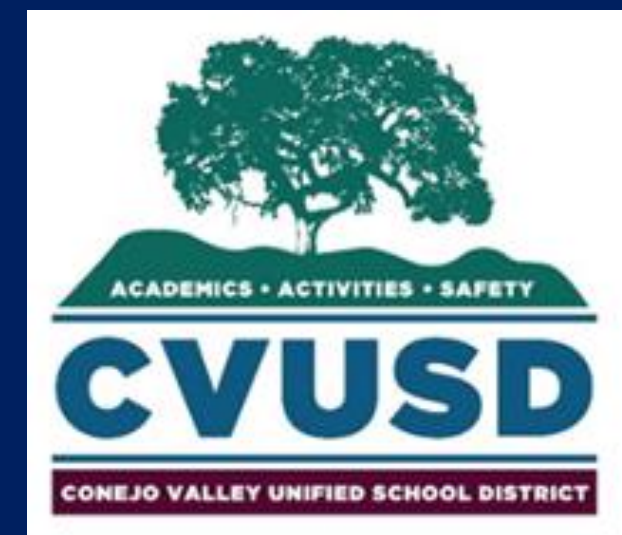


4 Conceptual Master Plan
Guidelines



5 Final Master Plan
Templates & Guidelines

Conejo Valley Unified School District – Master Planning Templates and Charrettes





Schedule of Master Planning Meetings & Deliverables 2016- 2017		
Meeting	Kick-off Meeting Complete	October 18 - October 28, 2016
Deliverable	Survey Due: (45 Days)	No later then December 12, 2016
Meeting	Charrette #1 (7 Days)	Charrette to occur between December 12 - December 19, 2016
Deliverable	Site Analysis (14 Days)* Adjustment for Holidays	Site Analysis: December 19, 2016 - January 9, 2017
Meeting	Charrette # 2 (7 Days)	Charrette to occur between January 9, 2017 - January 13, 2017
Deliverable	Alternative Concepts (14 Days)	Alternative Concepts: January 13, 2017 - January 30, 2017
Meeting	Charrette # 3 (7 Days)	Charrette to occur between January 30, 2017- February 3, 2017
Deliverable	Conceptual Master Plan (14 Days)	Conceptual Master Plan: February 3, 2017 - February 20, 2017
Meeting	Charrette # 4 (7 Days)	Charrette to occur between February 20, 2017 - February 24, 2017
Deliverable	Final Master Plan (14 Days)	Final Master Plan: February 24, 2017 - March 10, 2017
Final Deliverable	Final Documents (45 Days)	No later than April 24, 2017
	Notes	